

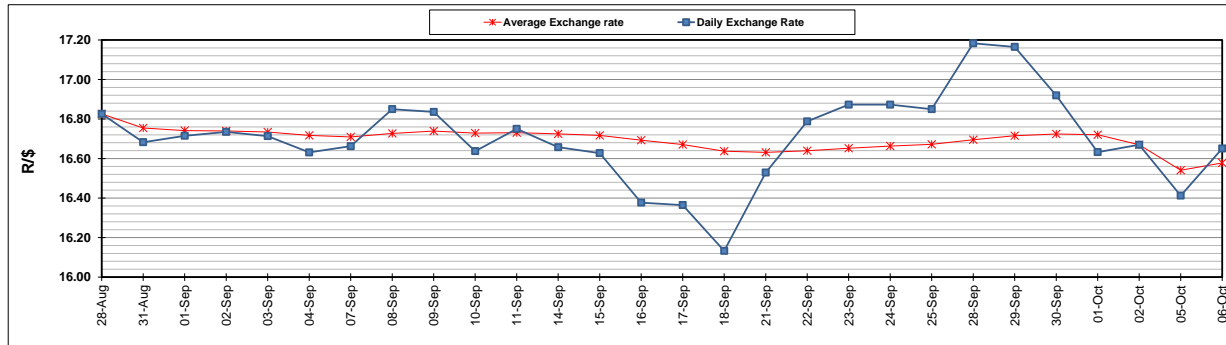
	PETROL 95 ULP	PETROL 93 ULP & LRP	DIESEL 0.05%	DIESEL 0.005%	ILL. PAR.
GAUTENG PUMP PRICE (SA c/l) AS FROM 07/10/2020	1,486.000	1,466.000	-	-	-
WHOLESALE PRICE (SA c/l) AS FROM 07/10/2020	-	-	1,237.560	1,238.960	640.828
SINGLE NATIONAL MAXIMUM RETAIL PRICE	-	-	-	-	798.000
BASIC FUEL PRICE - 06/10/2020 (SA c/l)	537.811	526.886	501.405	503.116	477.732
PRESS RELEASE CONTRIBUTION TO BFP 02/10/2020 - 06/10/2020 (SA c/l)	565.470	546.470	576.630	581.030	512.128
UNIT OVER/(UNDER) RECOVERY - 06/10/2020 (SA c/l)	27.659	19.584	75.225	77.914	34.396
AVERAGE BASIC FUEL PRICE 02/10/2020 - 06/10/2020	526.227	515.343	483.301	484.866	455.617
AVERAGE UNIT OVER/(UNDER) RECOVERY 02/10/2020 - 06/10/2020	39.243	31.127	93.329	96.164	56.511

ANALYSIS MOVEMENT OF AVERAGE OVER/(UNDER) RECOVERY

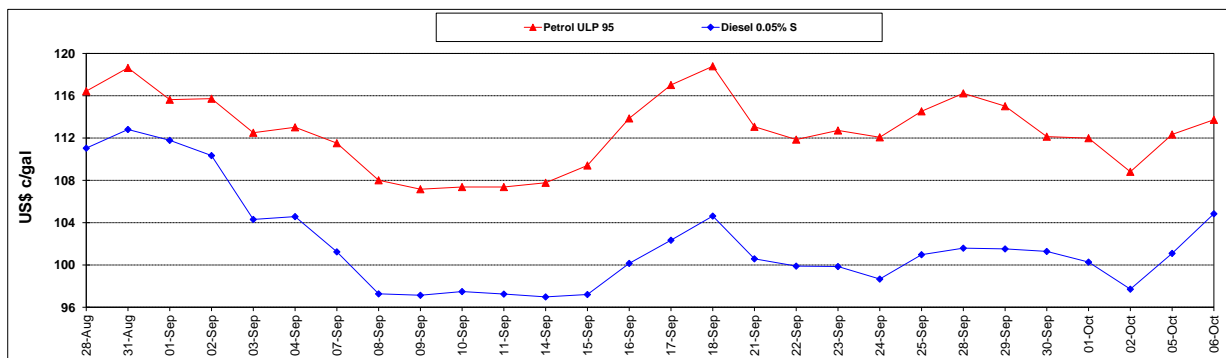
	PETROL 95	PETROL 93	DIESEL 0.05%	DIESEL 0.005%	ILL. PAR.
- MOVEMENT IN INTERNATIONAL PRODUCT PRICES	34.710	26.688	89.166	91.987	52.586
- MOVEMENT IN EXCHANGE RATE	4.533	4.439	4.163	4.177	3.925
AVERAGE UNIT OVER/(UNDER) RECOVERY 02/10/2020 - 06/10/2020	39.243	31.127	93.329	96.164	56.511

R/\$ EXCHANGE RATE - (R/\$16.6510 - 06/10/2020)

EXCHANGE RATE USED IN BASIC FUEL PRICE



INTERNATIONAL PRODUCT PRICES OF BASKET USED IN BASIC FUEL PRICE



BASIC FUEL PRICE IN SA CENTS PER LITRE

